



August 2024

CURRENT CONVERSATIONS



Building Trust and Focusing on the Future

Dear Members,

I am thrilled to announce the latest measures we have taken to transition Tri-County Electric into a more timely and transparent member-owned cooperative. The launch of our new e-newsletter, "Current Conversations", allows us to provide cost-effective and in-depth Cooperative updates. This newsletter, along with the *Texas Co-op Power* magazine, will be used as proactive communications directly to you. Social media and the website also offer additional information for you. We understand there are various communication preferences, and our goal is to engage with you through conversations that are current and relevant to you. We hope you find this first edition enjoyable. Please share your feedback with us by replying to this email as we strive to better serve you.

A handwritten signature in blue ink that reads 'Scott Spence'.

Scott Spence
President & CEO

NEW MEMBER INFORMATION CENTER



Welcome to the NEW Member Information Center. This is your destination for transparent Tri-County Electric Cooperative information that hasn't been shared in the past. Today, we're adding five years of audited financial statements and a comprehensive schedule of all Tri-County Electric billing rates. In the coming months, the new auditors will complete the current fiscal year, and that information will also be included. We will be adding more information on a regular basis to keep you connected and informed.

[CLICK HERE TO VIEW](#)

PCRF

This June, we developed a PCRF tracker to increase transparency and understanding of power cost trends.

[Learn More](#)



Charitable Foundation



Donating to Cooperative Giving is a powerful way to help a neighbor in their

time of need. Tri-County Electric Cooperative employees and members are leading the charge to voluntarily fund the Cooperative Giving program. Contributions to Cooperative Giving do not come from members' electric bill payments unless a member requests to donate.

The program will provide electric bill assistance to qualifying members facing financial hardship. Applications are expected to be available this fall through Texas Neighborhood Services for all members in the Cooperative's service area.

Learn more about how you can donate to help your fellow cooperative member.

[Donate](#)

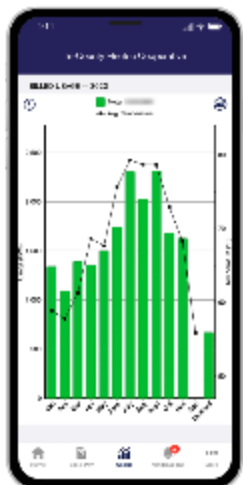
MyTriCountyTX



Registration

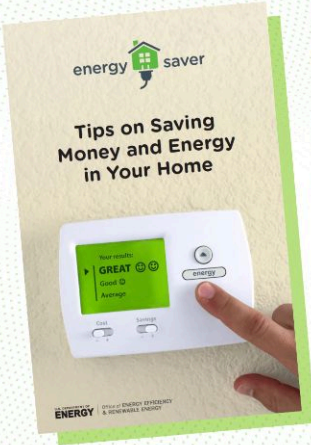
Not yet registered for MyTriCountyTX, 24/7 online account access at your fingertips?

[Register Now](#)



Usage Tracking

The MyTriCountyTX mobile app provides graphs that show your energy use in an easy-to-read format. These graphs incorporate power usage, temperature, and dates. Having access to this data lets you see how household demand corresponds to outdoor temperatures.



The book cover features the 'energy saver' logo at the top, followed by the title 'Tips on Saving Money and Energy in Your Home'. Below the title is a photograph of a hand interacting with a smart thermostat. The thermostat screen displays 'Your health: GREAT' with a green arrow pointing right, and 'energy' below it. At the bottom of the cover, it says 'U.S. DEPARTMENT OF ENERGY'.

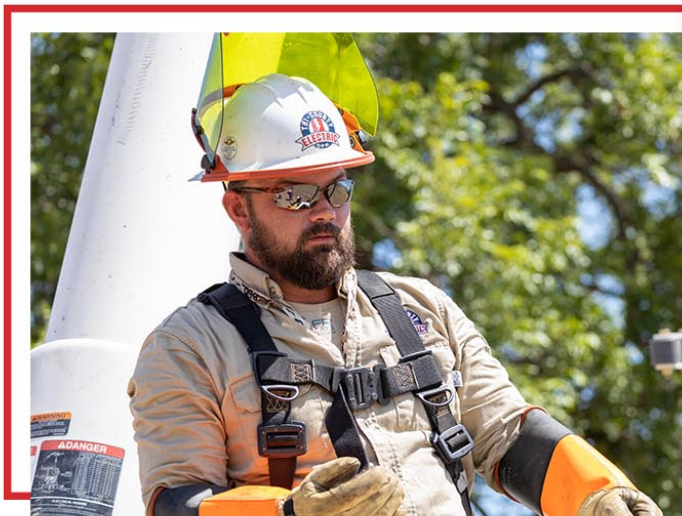
U.S. DEPARTMENT OF ENERGY

Energy Saver Guide: Tips on Saving Money and Energy at Home

[CLICK TO DOWNLOAD](#)



We want to extend our gratitude and thanks to the 133 Tri-County Electric employees out working another 100+ degree day to ensure the delivery of safe and reliable electricity to your home or business.

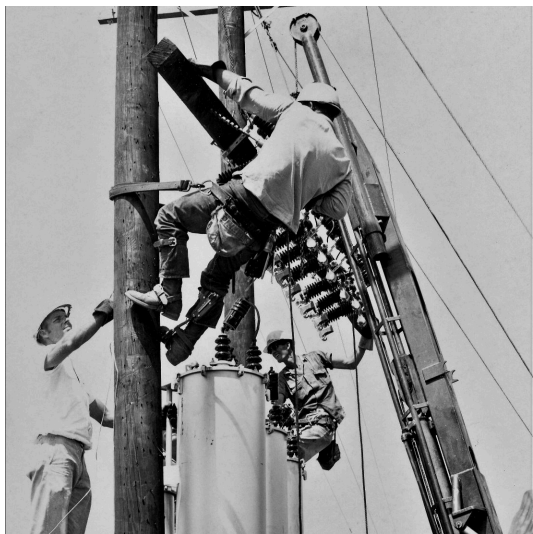
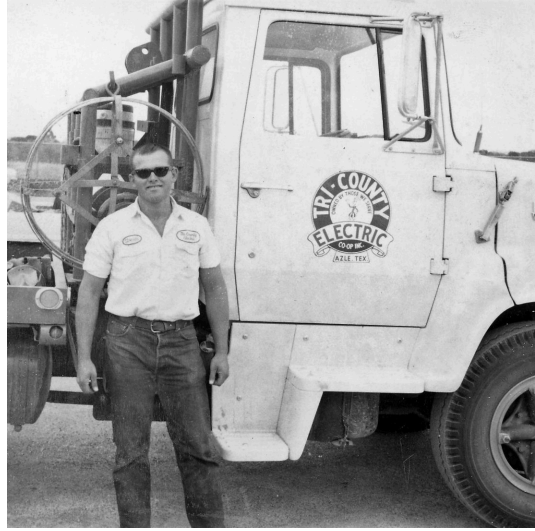




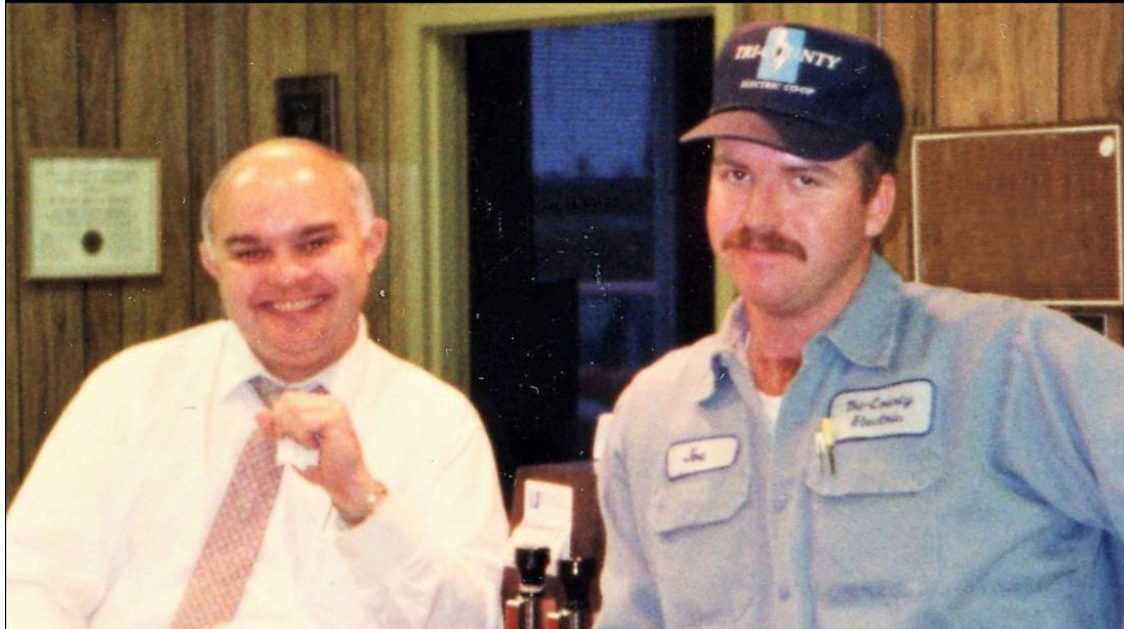
From humble beginnings in 1939 with 375 members and a rented office in the rock building that now houses the Azle Historical Society, we reflect on our history and look forward to a brighter future together with you.

As we celebrate 85 years of providing electric service to your homes and businesses, we take time to appreciate the hard work and dedication of past employees. Thank you for laying the cooperative foundation on which we continue to build.









OCTOBER 3

HELD VIRTUALLY AT 7 P.M.

**85TH
ANNUAL
MEETING**

Stream online: tccetexas.com/annual-meeting

Listen by phone: 855.710.6229

If you have questions, you can contact us through our [website](#), or call 817.444.3201

[Unsubscribe](#)